

EVERYMAN
THEATRE · CHELTENHAM



Relaxed Performance Pack

This pack will help to prepare you for your visit to the Everyman Theatre's main house or Irving Studio Theatre for one of our relaxed performances.

Relaxed performances are open to everyone, but the environment has been specifically adapted for individuals with an Autistic Spectrum Condition, those with sensory and communication disorders, those with learning disabilities and anyone who would benefit from a more relaxed environment including pre-school children and people with dementia.

These performances are adapted in a variety of ways in order to reduce anxiety and ensure a safe and enjoyable live theatre experience.

There is a relaxed attitude to audience noise, the lights in the auditorium remain on low throughout the show, sudden loud noises are softened and audience members are free to leave and re-enter the auditorium at any point. There is a Chill Out Room, where a space is made available for audience members who need a bit of quiet time before and during the performance.

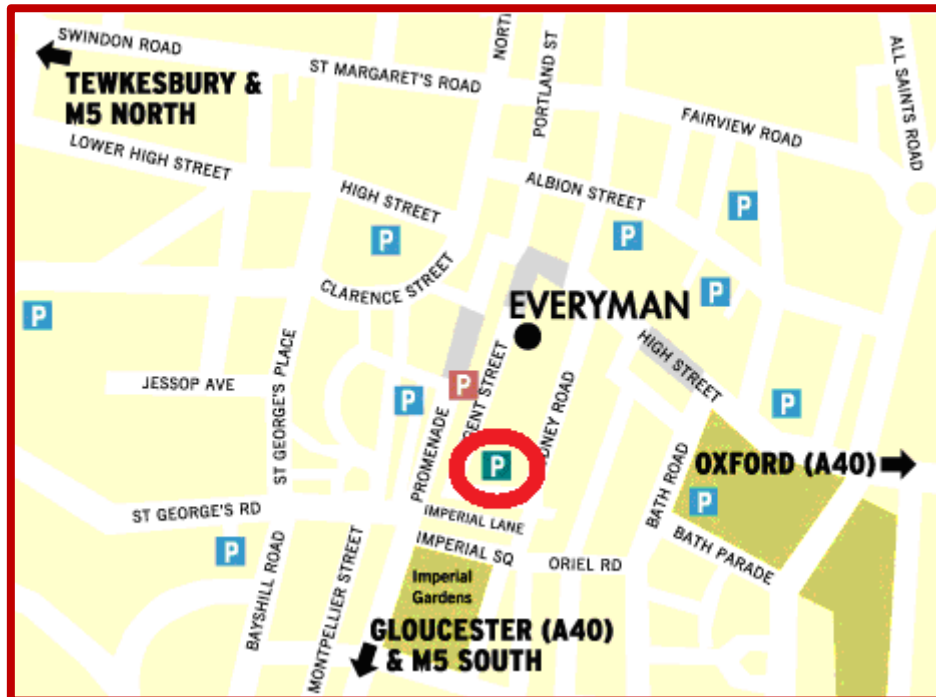
This visual resource is to help prepare you for a new experience and help you to become familiar with the surroundings and the performance. We would be delighted to arrange an orientation tour for you before your visit to us so that you can familiarise yourself with our building and facilities. If you're bringing a school party you may like to use the theatre risk assessment which can be found on the access page. If you have any further questions or specific requests, please do not hesitate to get in touch with:

Sally-ann Rhodes on 01242 695574 sally-ann.rhodes@everymantheatre.org.uk

or Jenny Wicks on 01242 512515 x 254 jenny.wicks@everymantheatre.org.uk

Getting to us and parking

We would suggest that you aim to get here in plenty of time as Cheltenham gets very busy and the Everyman is in the town centre, so it's worth allowing plenty of time to find a parking space.



The Everyman is attached to the Regent Arcade car park, which is a multi-storey car park. There is a flight of steps from here that leads directly into the theatre and you can follow the signs in the car park.

This is what the entrance to the car park looks like:



This is where you can pay for parking after watching the show.



If you park in the Regent Arcade car park, you will come down some stairs and into the Everyman Theatre. The Irving Studio Theatre door is directly on the right through this door.



There are additional disabled parking bays outside the theatre on Regent Street for blue badge holders.

At the theatre

If you come on foot, or park on the street, you will come in through the main entrance to the Everyman at the front.

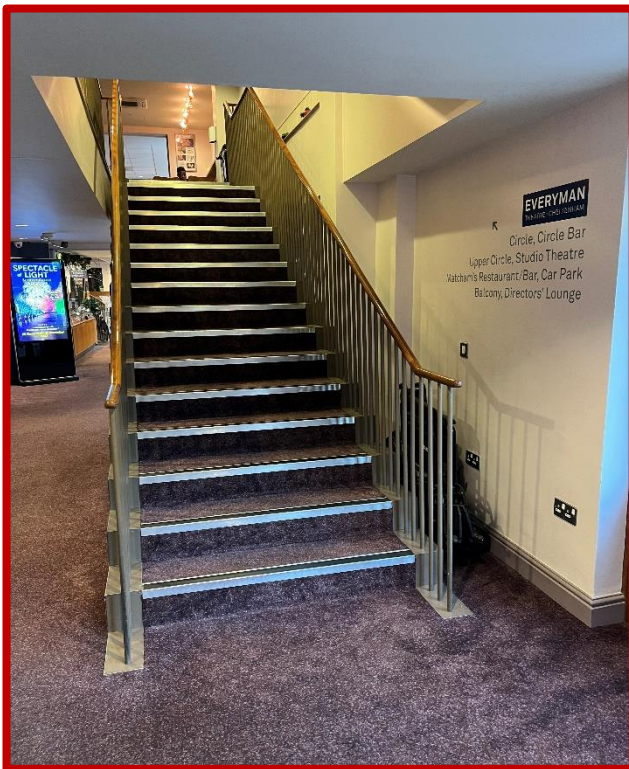


You can pick your tickets up from the Box Office on the ground floor.

The Irving Studio Theatre is on the second floor. To get there, you will either go up the main staircase, two flights, or in the lift. The main house auditorium Stalls are on the ground level, circle is on the first floor.



Doors to the Stalls



Stairs to the first floor



Main foyer by Stalls doors

Chill-Out Space

We offer a chill-out space for you to relax and play. You are free to leave and re-enter the auditorium at any point. This space is made available for audience members who need a bit of quiet time before and during the performance.

For Irving Studio Theatre relaxed performances we use Matchams room on the 2nd floor:



For the main auditorium relaxed performances we use Circle Bar on the first floor:





There is the option of being able to carry on watching the show live on the television screen in the circle bar chill out space.

Toilets

We have lots of toilets including three accessible toilets:

Ground floor: through the café (with nappy changing facilities)



Main auditorium: on the left-hand side of the Stalls (you'll need a radar key to access this – please ask a member of staff if you don't have your own)



Second floor: next to the lift (on the left) on the same level as Matchams function room:



In addition to the theatre toilets, **for selected relaxed performances**, we offer a Mobiloo.



A Mobiloo is a mobile accessible toilet with adult-sized changing bench, hoist and a friendly attendant.



A toilet

Toilet with retractable grab rail to each side



A hoist

Electric, ceiling track hoist allowing access to all areas of the Mobiloo



A changing table

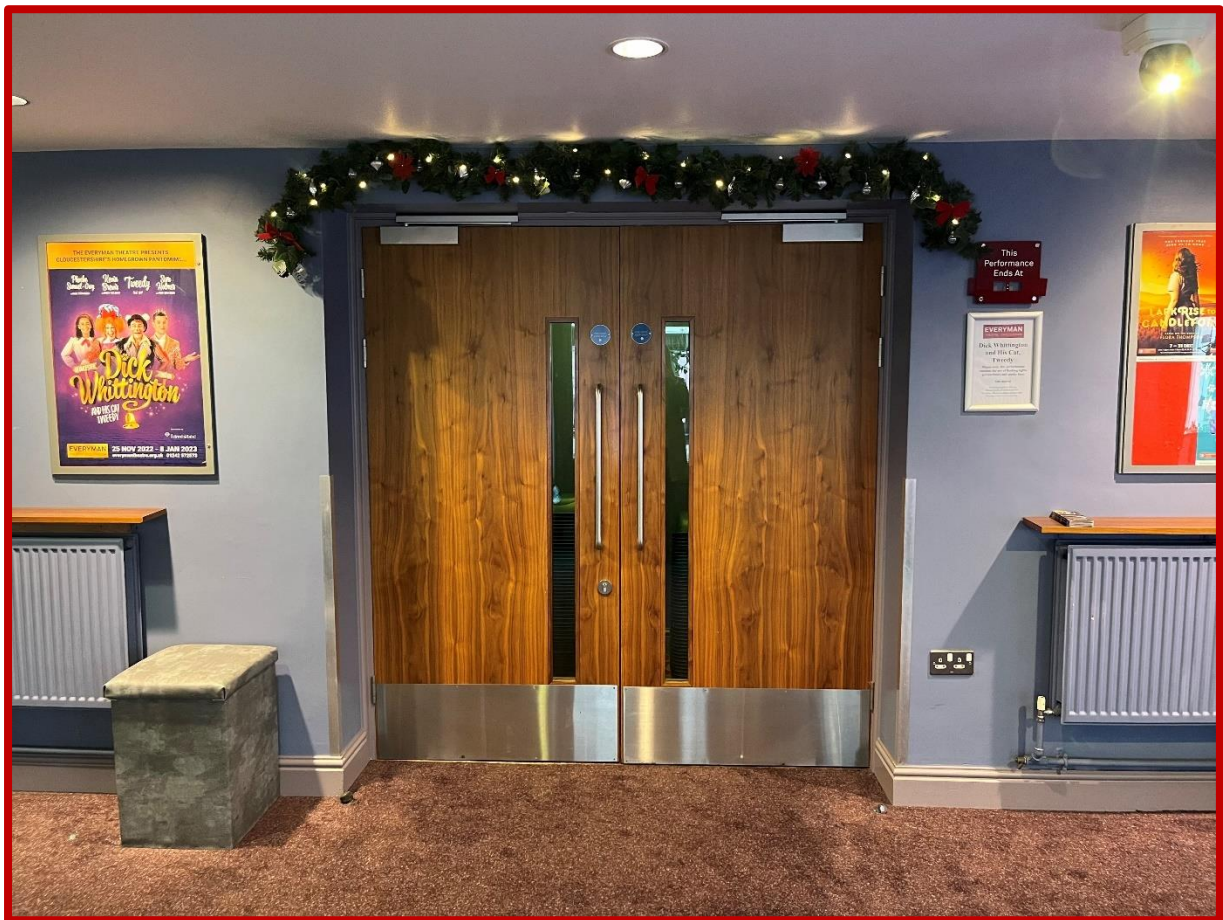
Full size adjustable height changing table

Wheelchair access

Our wheelchair spaces are located on the ground level in the Stalls. You can easily enter the Stalls by using our wheelchair access ramp which can be found next to the Kiosk on the right-hand side of the lift. Anyone can use this entrance if you find steps a challenge.



The Stalls can be entered through the main stalls doors pictured below.



It will be a little bit darker as you enter but there are plenty of lights to guide your way. You will find a couple of steps down into the stalls before you see the stage in front of you.



The auditorium is very pretty and you may want to look up to see the lovely chandelier and painted ceiling.



Our Friendly Everyman Staff

There will be plenty of staff around if you have any questions. They will be wearing black shirts, black waistcoats, name badges and big smiles.



The Everyman has an Access Team with staff from all departments, who are all happy to help. Please ask, even if you think it may be a silly question!



Food & drink

We have a café that serves children's meals and a large selection of hot meals, sandwiches and cakes if you'd like to eat with us before the show.



We have a kiosk that sells programmes and sweets too.

Perhaps you'd prefer to have an ice cream in the interval instead.

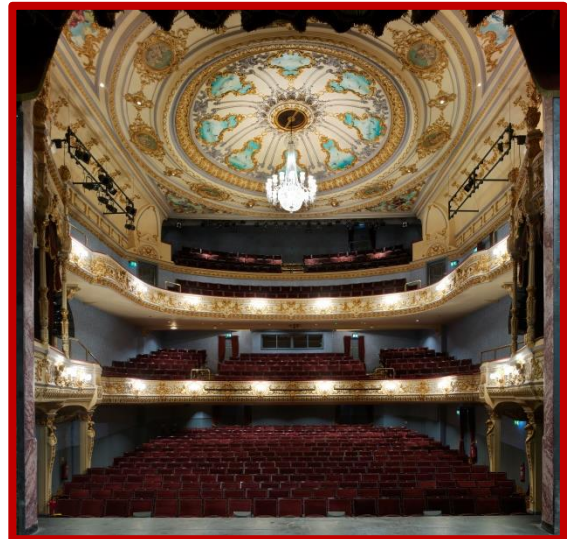


Our performance spaces

The Irving Studio Theatre with space for approx. 50 people



Main Auditorium with space for approx 400 people during relaxed performances
(700 at full capacity)



The Show

A Visual Story will be available a week before your visit which includes photos of the cast and set, and will offer a summary of each scene.

On the day, the actors will introduce themselves from the stage just before the performance. They will tell you their names and tell you about the characters they play.

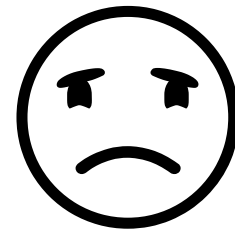
There will be moments in the show that can be more **fast-paced, happy, noisy or sad**.



Noisy



Fast



Sad

During the show you might find something funny, you can laugh if you like. You might hear other people in the audience cheer, clap, shout out or make noise. You can join in if you like. It's OK if you want to make some noise too.

Also, if at any point during the performance, you want to take a break or take some time out, you can leave the auditorium and go to the chill-out space where you can relax, and come back when you're ready.

Please speak to one of our friendly ushers who will be delighted to help you.

If you have any questions about our relaxed performances, please contact the Group and Access Sales Manager, Sally-ann Rhodes:

sally-ann.rhodes@everymantheatre.org.uk

We look forward to welcoming you all to the theatre soon! 😊